

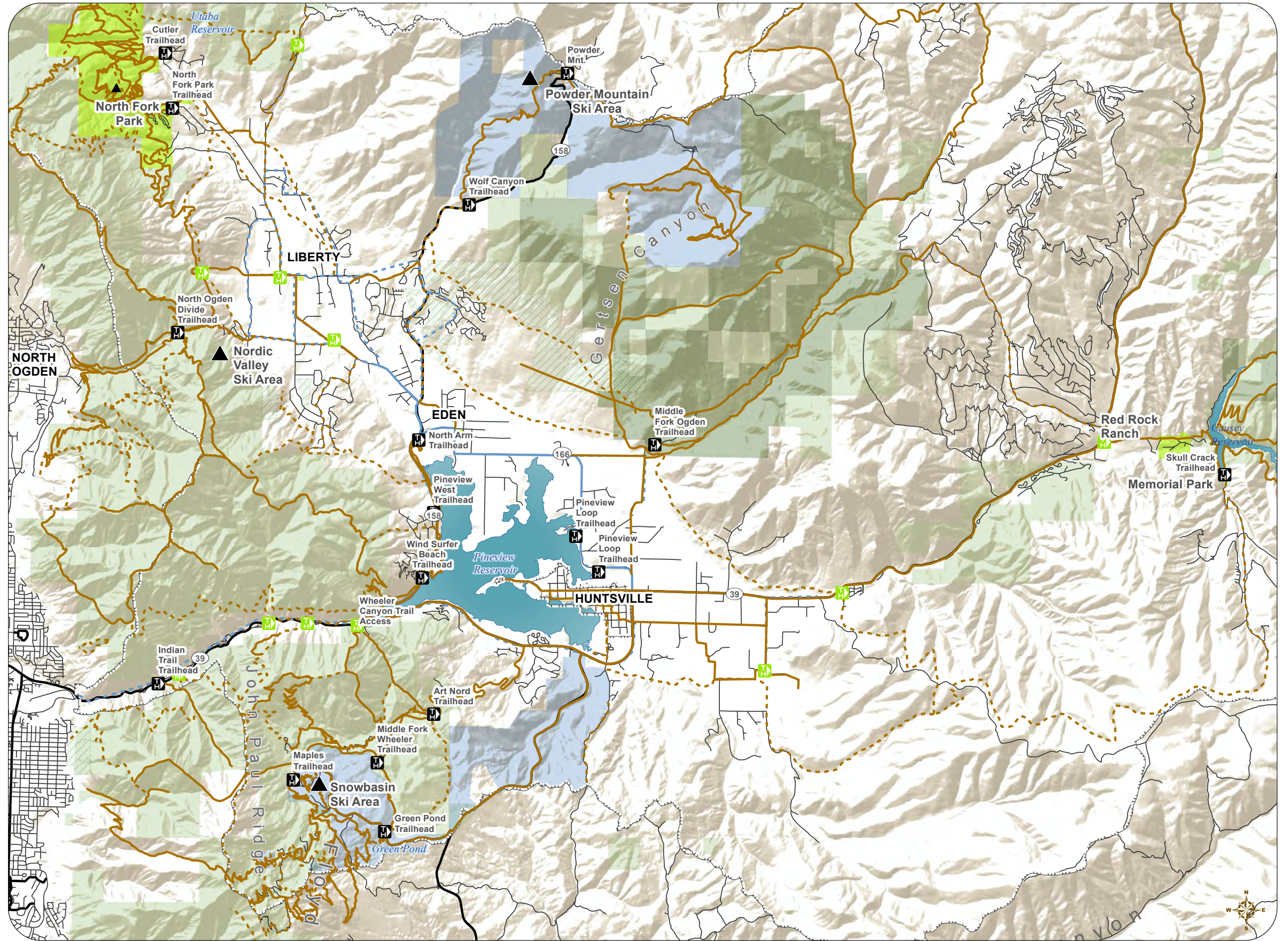
MAP 9: OGDEN VALLEY RECREATION

Legend

-  Ogden Valley Boundary
-  Lakes
-  Parks
-  State Route
-  Local Road
-  Proposed Trailhead
-  Trailhead
- Public Lands**
-  USA
-  State of Utah
- Weber County Zoning**
-  O-1 Open Space
-  DRR-1
-  Ski Areas
- Recreational Trails**
-  Proposed
-  Existing
- Active Transportation**
-  Proposed Multiuse Pathway
-  Existing Multiuse Pathway

Note: When considering recreation routes, also view the Ogden Valley General Plan Active Transportation Map.

Source:
 UDOT Open Data, Updated on September 9, 2014
 Accessed on October 7, 2014
 Weber County
 USGS Open Data



Recreation

